

HEAD'S HERALD

HIGH EXPECTATIONS | HIGH ASPIRATIONS | HIGH STANDARDS | YOU WILL SUCCEED

VOLUME 11 DATE 22ND NOVEMBER 2024

Dear Parents/Carers

I hope you are well and bracing the arctic conditions. Apparently, we are set for milder weather next week but we shall see.

The Year 11 have been amazing this week with their mock examinations and the preparation they have been immersed in is really paying off. The mock exams are conducted exactly as the real GCSE exams and this is because we have to make sure the young people are what we called 'exam conditioned'. As well as being academically prepared we need to make sure they are mentally and physically prepared about the systems, process and logistics of the exams too, as this can often cause them unnecessary worry and stress.

I can only apologise about the temperature in the Ball Hall and thank you for ensuring that the young people had extra layers and followed the guidance we had sent out. We have managed to sort the sensors and have been able to alter the temperature. Thank you for your support with this. Year 11 still however, need to come in full uniform. Just because they have exams, does not mean they can wear non-uniform items. The same school rules as always apply and are expected every day and will be challenged.

I know we have had a couple of parents' evenings over the past few months and thank you so much for your feedback. We act on the feedback where there is a question and or a suggestion. The two main themes appearing are SAM learning and parents/carers not knowing where to access what their child is learning in each subject. Mr Kinsey is working on a more detailed plan for you all and will be communicating to you in a new Teaching and Learning bulletin, as it is crucial you feel a part of your child's learning journey. There is information around each subject area on the website, however, if you do not know where that it then we have still not informed you properly. SAM Learning will be addressed in our Parents Forum coming up on Thursday 28th November. To confirm your attendance, please click on the following link <https://forms.office.com/e/PHvRDXkYg4>. If you experience any issues or have questions, please contact Mr Mason, Associate Assistant Headteacher at smason@boteler.org.uk.

Thank you as always for your support, it is much appreciated. Have a lovely weekend and stay safe with Storm Bert on the way.

Kind regards

Beverley Scott-Herron
Headteacher

YEAR 11 – MOCK TIMETABLE NOV/DEC 2024

WEEK	Date	Morning	Break	Morning	Early Lunch	Afternoon
2	Mon 25 Nov	ENGLISH LANGUAGE Paper 2 1 hour 45	10.55	11.15am	12.15	Afternoon 13.00 CHEMISTRY Paper 1 1 hour 15/ 1 hour 45
	Tues 26 Nov	MATHS Paper 2 Calc 1 hour 30				HISTORY Paper 2 1 hour 45
	Weds 27 Nov	PHYSICS Paper 1 1 hour 15/ 1 hour 45				French Reading and listening 35 mins. / 45 mins
	Thurs 28 Nov	COMP SCIENCE PAPER 1 2 Hours		RELIGIOUS STUDIES Paper 2 50 mins		ENGLISH LITERATURE 1 hour
		Morning 08.55	Break 11.10	Morning 11.25	Early Lunch 12.25	Afternoon 13.00
	Fri 29 Nov	MATHS Paper 3 Calc 1 hour 30				HISTORY paper 3 1 hour 20

WEEK	Date	Morning	Break	Morning	Lunch	Afternoon
1	Mon 2 Dec	COMP SCIENCE PAPER 2 1 hour 45	10.55	11.15am	13.15	MUSIC Listening 1 hour
		Morning 8.55	Break 10.55	Morning 11.15am	Lunch 13.15	Afternoon 14.00
		COMP SCIENCE PAPER 2 1 hour 45		SPORT 1 hour 15		

Year 11 Mock Exams

Year 11 have been exceptional in the way they have conducted themselves during the first week of their Mock Exams.

There is a very full and busy week ahead for them this week.

A reminder that students need to continue to be on time for both morning and afternoon exams.

- Morning exams - students to be in the canteen by 08:45
- Afternoon exams - students need to be in the canteen by 12:55

Staff have been told not to disclose Mock grades to students directly as we are having a full Mock Exam Results assembly the first Monday back after Christmas. This assembly replicates how students will receive their results for real in August and is an important part of their exam preparation.



Cold Weather

We appreciate it is cold but blankets are not allowed in school and will be confiscated. Some young people are wearing them and they are not permitted. Coats are recommended in order to keep warm when outside the building. The heating is on in school and it is lovely and warm so there is no need for a blanket.

If a child wants to wear scrunchie, bobble or small bow then they need to be black or navy blue please.



Italy Visit 2025

Reminder that the next payment for the Italy visit is due by 2nd December 2024. Payments should be made via iPay.

Does your child ride a bike to school?

Does your child wear a helmet?

We continue to see a high number of students cycling to school. Of course, an essential mode of transport for many and the many health benefits that come with exercising using a bike are reasons for encouraging your child to cycle to school. However, we do not see many students wearing helmets and keeping themselves safe.



Wearing a bike helmet is essential for your child's safety when riding a bike. Here's why it matters:

1. Reduces the Risk of Head Injuries

- Head injuries are the leading cause of serious injury or death in bike accidents.
- Helmets are designed to absorb the impact during a fall or collision, reducing the risk of traumatic brain injuries by up to 85%.

2. Sets a Positive Example

- Wearing a helmet teaches your child the importance of safety and responsibility.
- It encourages lifelong habits of protecting themselves while engaging in activities like biking, skating, or scootering.

3. Compliance with Laws

- Many regions have laws requiring children to wear bike helmets. Following these laws keeps your child safe and helps avoid legal penalties.

4. Boosts Visibility

- Helmets can ensure your child is seen on roads or when in the community, therefore reducing the risk of a collision.

Please can we ask you to reflect on the reasons why your child may not wear a helmet and at this moment, it is our recommendation that they do. We will be looking at potential funding to ensure that all children have access to a bike helmet, where we could look at enforcing their use when using a bike to commute to school.

Safe parking at the end of the school day

We appreciate that there is limited parking at the end of the school day when picking up your child, however, on far too many occasions cars are parking in the yellow bus stop markings. This is putting our students at risk, with busses then having to stop outside of the zone, often then stopping on the Pelican Crossing. Further to this, we are then seeing one lane of Knutsford Road blocked, and cars speeding to get out and around the busses, often cutting in front of other cars.

We know this will not apply to many, however, we want to increase the awareness of this concern as we all have a duty to ensure that our students are safe when they leave school.



Personal Development

Please complete the attached form regarding what activities your child does out of school. We are looking at our wider curriculum offer and the community offer.

Year 7 <https://forms.office.com/e/LmhK8EYb5q>

Year 8 <https://forms.office.com/e/8rQLUGy0Q2>

Year 9 <https://forms.office.com/e/Ww390EJA3r>

Year 10 <https://forms.office.com/e/SXzE3H1L6H>

Year 11 <https://forms.office.com/e/VtWueMRfrf>

Year 10

Please see the Work Experience letter to Year 10 parent and carers <https://t.ly/dPhek>

Once you have agreed a work experience placement with an employer and your child, please complete the following forms:

Form 1: <https://t.ly/A0fX6>

Form 2: <https://t.ly/acE1->

If you need a paper copy please ask your child to pick one up from Mrs Mawby or their Head of Year. We will then contact the employer for the relevant paperwork once we have received these two forms.

Lost Property and Uniform

Any lost property will now be kept in Mrs Mawby's office.

We currently have a few coats with no names on them if your child has lost theirs.

We also have some coats which have been donated to the school shop if you would like one for your child. Please send your child to Mrs Mawby or email amawby@boteler.org.uk

We also have a vast number of school shirts in all sizes. If you would like any again let Mrs Mawby know or send your child to her.

STUDENTS' CHRISTMAS FAYRE



EVERYTHING
£1 & UNDER
CASH ONLY

16TH DEC
15.00-17.00
IN THE HALL



- ★ DRINKS ★ FOOD ★ COUNCIL & HOUSE STALLS ★
- ★ TOMBOLA ★ CAROLS ★ RAFFLES ★ HAMPERS ★
- ★ CHRISTMAS GIFT STALLS ★ FATHER CHRISTMAS ★

PARENTAL ENGAGEMENT

Engaging in Your Child's Learning at Home

As parents, you play a crucial role in your child's education. Research from the Education Endowment Foundation (EEF) highlights that parental involvement in learning at home can have a significant positive impact on student outcomes, particularly in the early years of secondary education. Simple, consistent actions can make a world of difference.

Here are three key strategies to engage in your child's learning at home:

1. Create a Dedicated Study Space

Ensure your child has a quiet, well-lit area for completing homework and studying. A structured environment enhances focus and reduces distractions, setting the stage for effective learning.

2. Show an Interest in their Learning

Regularly ask about what they are studying and discuss it with them. Studies show that when parents express interest in schoolwork, children feel more motivated and take greater pride in their learning.

3. Support Good Routines

Encourage your child to establish regular homework and revision schedules. Research demonstrates that consistent routines boost productivity and help students manage their workload effectively.

Year 7 Parents' Evening – 2nd December

We are delighted to invite parents and carers of Year 7 students to your first parents' evening on **Monday, 2nd December, from 15:30 to 19:00**. This is a fantastic opportunity to discuss your child's progress as well as the transition to the Boteler Family.

To book your appointments, please click on the link <https://boteler.schoolcloud.co.uk/>. If you experience any issues or have questions, please contact Mr. Mason at smason@boteler.org.uk



THANK YOU

YOUR POPPY SUPPORTS THE ARMED FORCES
COMMUNITY PAST AND PRESENT

Thank you for supporting the Poppy Appeal.

Sir Thomas Boteler C of E High School

Raised in 2024

£76.82

To find out more about how your donation helps,
visit [rbl.org.uk](https://www.rbl.org.uk)

Registered charity number: 219279

Tolerance Schools Tour

The whole school had assemblies from Jon and Teelo who delivered a powerful message about respect and tolerance in society.

They were also entertained by their singing and rapping, some even joined in! Jon tackled this emotive issue with a sensitive, caring and compassionate message of hope in these difficult times, emphasising the need for respect and tolerance towards our fellow human beings of all backgrounds, creeds and ideologies.

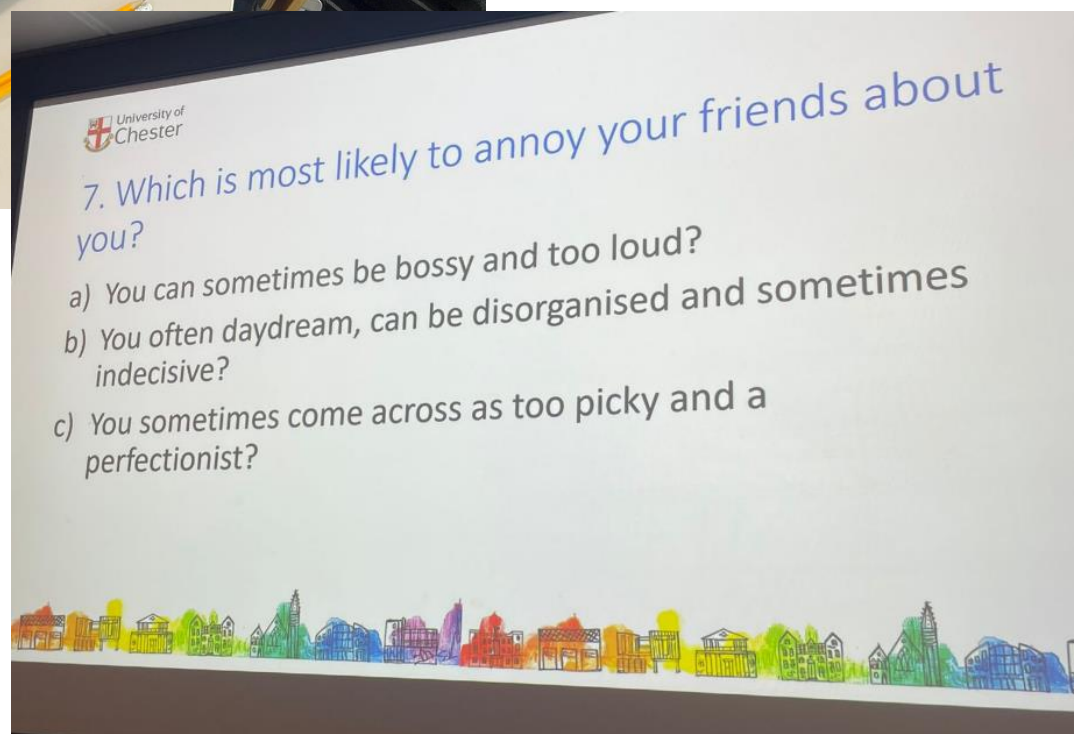




University of Chester

Chester University Visit

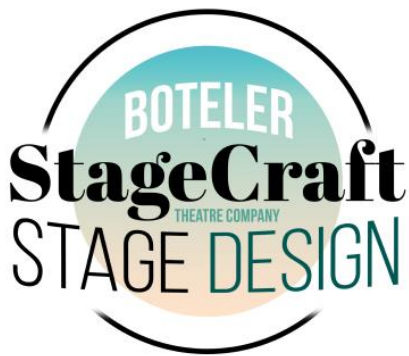
45 Year 8 students had a great insight into University life and further education options with a trip to Chester University. They took part in 2 workshops and had a campus tour whilst gaining points for their TCAT challenge award. Staff praised their maturity and commented they had never been asked so many questions by a school before! Well done Year 8.





Rehearsals continue and we are beginning to block scenes and bring to life the characters and story of 'Brain Play' by Chloe Lawrence-Taylor and Paul Sirett as part of the National Theatre Connections Festival 2025.

Mrs Guttridge and the students have been busy creating props and set as part of the Set Design team. During rehearsals, this week the performers and stage management teams had their first experience of working with the prototype puppet that represents the adult characters, such as Tony, the father of the central character Mia.



This is the first time we have experienced performing in this style and it is a learning curve for everyone involved. Many thanks to Mrs Tarry and Mr Vernon for their support with rehearsals and to the students for their dedication and creativity.



The performances at school will be on the 18th - 19th March 2025 and our performance at The Lowry, Salford will be 28th March 2025.

Talk like an Artist: Analogous Colour

It was wonderful meeting so many parents and careers at Year 8 parents evening. Let's take a peak at what's been happening in the studio!

Year 8 have been exploring the vibrant work of artist Kehinde Wiley, learning how he combines repetitive floral pattern and analogous colour.

Here 8 Indigo show their beautiful control of watercolor, and demonstrate their knowledge of analogous colour with their finished poppies to mark Remembrance Day.

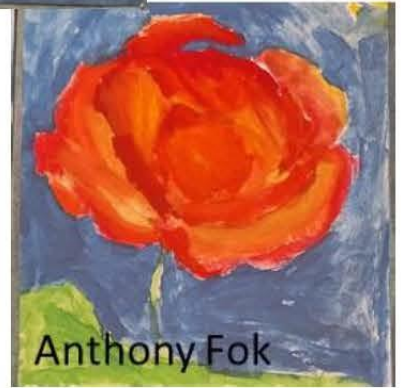
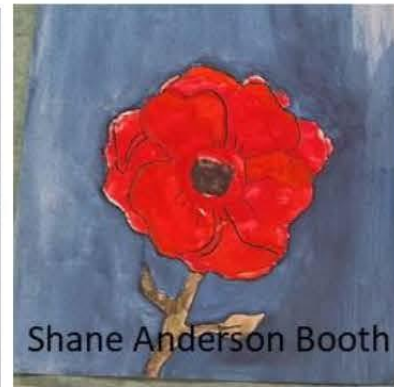
Beautiful art like Ruby's takes time. Here you can see the work in progress, and wasn't it stunning already? Final piece shown below.

It is easy to forget just how much effort goes on behind stunning artwork, so I plan to share some work in progress with you too, to celebrate total concentration, as well as reminding my wonderful artists that every lesson matters.



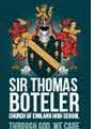
Ruby Baker – Year 8
Work in progress above,
finished piece below





Meanwhile Year 9 have been discovering the work of artist Shepard Fairey. They have been discovering how he uses shape, line and selective colour to create his work.


I asked Year 9 to independently create their own interpretation in the style of Fairey. Look how individual and expressive their collage outcomes have been. I am so proud and just had to share their success with you! Look how Abby Wilkinson has challenged herself. She has one lesson remaining to complete this piece on Friday and I cannot wait to see the completed piece.



SIR THOMAS BOTELER
SCHOOL OF CHURCH AND COMMUNITY
THROUGH GOD, WE GROW

BIG PICTURE

Remembrance week



ZOOM:
Shape
Colour
Line

TECHNIQUE:
Cutting
Collage
Transfer technique
selective colour



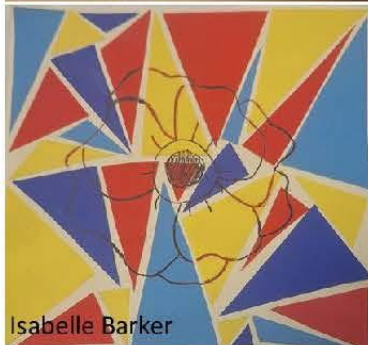
Abby Wilkinson – Year 9
Work in progress



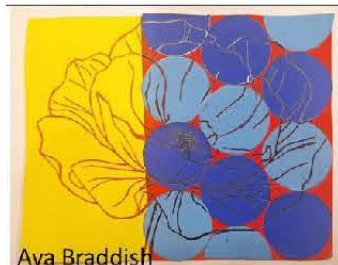
Jamie Mannion



Amelia Babiracka



Isabelle Barker



Ava Braddish



HAF

Holiday Activities and Food

Are your children
on benefit related
free school meals?

Scan me



If yes, they can attend fully funded
holiday activities at Easter, Summer and Christmas.
Register your interest now at warrington.gov.uk/haf
or email haf@warrington.gov.uk to find out more.

Not eligible?

Many clubs offer paid places at a reduced rate.



WARRINGTON
Borough Council



**Department
for Education**



**SIR THOMAS
BOTELER**
CHURCH OF ENGLAND HIGH SCHOOL
THROUGH GOD, WE CARE

DANCING IN DECEMBER

SHOWCASING A VARIETY OF YEAR GROUPS AND DANCE STYLES
FROM ACROSS THE DECADES - INCLUDING CHRISTMAS SONGS!



12TH DECEMBER 2024 18:00

AT SIR THOMAS BOTELER CHURCH OF ENGLAND HIGH SCHOOL

WILL INCLUDE SHORT INTERVAL WITH REFRESHMENTS SERVED BY THE PSB
£2 PER TICKET - TICKETS AVAILABLE FROM THE MAIN SCHOOL OFFICE