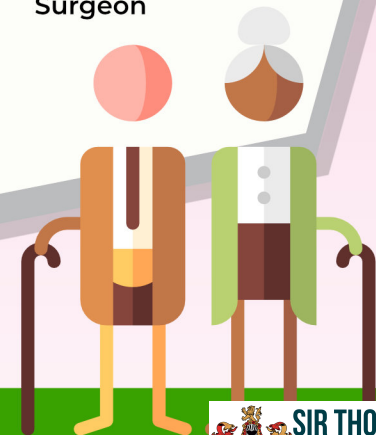


CARE SERVICES

The care system is set to change a lot over the coming years as the UK population ages. But the very young need looking after too as more parents go out to work, there's a growing demand for trained childcare providers.

Health and care is something we often take for granted, but couldn't cope without. People who work in health and care go home at the end of the week with more than just a paycheque. They know their work helps other people and makes our society a better place.

It takes more than doctors to keep our health service running including a range of careers in health care such as dispensing medicines in a pharmacy, giving eye tests, working as a dental nurse and many more.



GCSEs

- ENGLISH
- MATHS
- BIOLOGY
- CHEMISTRY
- PHYSICS
- ICT
- HEALTH AND SOCIAL CARE
- PSYCHOLOGY
- SOCIOLOGY
- CHILDCARE
- PHYSICAL EDUCATION

APPRENTICESHIPS

AVAILABLE IN

- Allied Health Profession Support
- Assistant Practitioner
- Care Leadership and Management
- Children and Young Peoples Workforce
- Clinical Healthcare Support
- Dental Nursing
- Dental Practice Manager
- Emergency Care Assistant
- Health and Social Care
- Learning Support
- Pharmacy Services
- Youth Work

A-LEVELS

- ENGLISH
- MATHS
- BIOLOGY
- CHEMISTRY
- PHYSICS
- ICT
- HEALTH AND SOCIAL CARE
- PSYCHOLOGY
- SOCIOLOGY
- CHILDCARE
- PHYSICAL EDUCATION

COLLEGE COURSES

LEVEL 1, 2 & 3 COURSES AVAILABLE IN

- Early Years Education and Care
- Health and Social Care
- Clinical Healthcare Support
- Adult Social Care
- Childcare
- Child Development
- Health and Fitness
- Sport Coaching, Fitness and Exercise
- Children's Care Learning and Development

T-LEVELS

- Health
- Healthcare Science
- Science
- Education and Childcare
- Accounting
- Management and Administration
- Legal Services
- Finance

UNIVERSITY COURSES

- BSc (Hons) in Health and Social Care
- BSc (Hons) in Nursing (Mental Health)
- BSc (Hons) in Health Psychology
- BA (Hons) in Healthcare Management
- BA (Hons) in Leadership and Practice in Early Childhood
- BA (Hons) in Conductive Education
- BSc (Hons) in Health Studies
- BA (Hons) in Well Being and Social Care Practices
- BSc (Hons) in Adult Nursing
- BA (Hons) in Health and Social Welfare
- BSc (Hons) in Midwifery
- BSc (Hons) in Medical Science

JOB TITLES

- Ambulance care assistant
- Care home advocate
- Care worker
- Children's nurse
- Cognitive behavioural therapist
- Community matron
- Dental nurse
- Emergency care assistant
- Emergency medical dispatcher
- GP
- Health play specialist
- Health promotion specialist
- Health service manager
- Health visitor
- Healthcare assistant
- Healthcare science assistant
- Learning disability nurse
- Maternity support worker
- Mental health nurse
- Midwife
- Music therapist
- Nurse
- Nutritionist
- Occupational health nurse
- Occupational therapist
- Occupational therapy support worker
- Operating department practitioner
- Paramedic
- Pathologist
- Patient transport service controller
- Phlebotomist
- Physiotherapist
- Physiotherapy assistant
- Practice nurse
- Psychologist
- Radiographer
- Radiography assistant
- School nurse
- Sexual health adviser
- Speech and language therapist
- Speech and language therapy assistant
- Sports physiotherapist
- Sterile services technician
- Surgeon